

## Create Unparalleled Synergy by Providing Seamless Interactions Between Manual Processes and Computer Automation



ENHANCE THE SKILL, EXPERIENCE AND PRODUCTIVITY OF TODAY'S PATTERN MAKERS WITH GERBER'S SILHOUETTE™.

SILHOUETTE AUTOMATED TECHNOLOGY ELIMINATES TIME-INTENSIVE, REPETITIVE TASKS, ENABLING YOU TO MAKE PATTERNS IN LESS TIME.

SILHOUETTE FUNCTIONS SIMILAR TO A TABLET PC. WHAT YOU DRAW OR TRACE ON THE INTERACTIVE TABLE IS AUTOMATICALLY CONVERTED TO DIGITALLY FORMATTED PATTERNS WHICH CAN BE USED TO MAKE MARKERS/NESTS INSTANTLY.

### Accelerate the pattern design process.

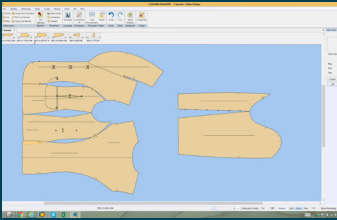
- Draw arrows, quick notes and other hand-drawn graphics directly onto the computerized pattern shapes.
- Input fit adjustments from the sample to computerized patterns by tracing directly on the Silhouette table, eliminating the need to measure the corrections.
- Instantly reflect any design changes into your pattern.

### Integrates with AccuMark® Pattern Design Software.

- Exchange information with a wide range of CAD systems through Gerber AccuMark pattern design, grading, marker making, and production planning system.
- Automatically update seam allowances and/or grading after pattern modifications.

### Ease the transition from manual to digital pattern making.

- Use the 2-button stylus pen for drafting and the 16 button cursor for digitizing. Silhouette dual input functions allow you to convert hard patterns to digital format, or trace new patterns using existing garments or samples without disassembling them.
- Enjoy the flexibility and ergonomics provided by Silhouette. Silhouette can be your integrated workstation. The base includes a swinging monitor arm which allows the monitor to be moved closer for detailed work, or moved out of the way when drafting and sketching.
- Draw in full scale on the Silhouette table and allow the system to size it to the computer screen.
- Work in a familiar environment with common tools like pens, rulers and pins.
- Pin garments or samples to the table top and trace pattern shapes into the system.



*Create new patterns or modify existing ones for new styles.*



*Cordless rechargeable 2-button electronic pen simplifies pattern drafting and digitizing.*



*16-button cursor accelerates digitizing.*

### **Available options and services.**

- Complete service and parts supply packages.
- Comprehensive operator and technician training available.

### **Silhouette Vinyl Overlay Kit (Optional).**

The kit includes two pre-cut sheets of “self-healing” vinyl and Velcro straps to hold in place.

### **Supported operating systems.**

- As of version 8.3: Windows® Vista® Business, Enterprise and Ultimate.
- As of version 8.5: Windows® 7 Professional and Ultimate 32-bit & 64-bit.
- As of version 9.0: Windows® 8 Professional and Enterprise 32-bit & 64-bit.
- As of version 10.0: Windows® 8.1 Professional and Enterprise 32-bit & 64-bit.

NOTE: Configurations vary according to options selected. Specifications are subject to change without notice.

AccuMark and Silhouette are trademarks or registered trademarks of Gerber Technology, Inc. Silhouette products are patent protected.

Windows is a registered trademark of Microsoft Corporation.

All other trademarks or registered trademarks are the property of their respective owners.

**Gerber Technology**  
24 Industrial Park Road West  
Tolland, CT 06084

**TOLL FREE (USA)**  
800-826-3243

**TELEPHONE (International)**  
+1 860-871-8082

[www.gerbertechnology.com](http://www.gerbertechnology.com)

Form No. 09032015